



## Win&Mac Dual System 2.4G Keyboard

GKA33S

### User Manual

www.iClever.com

Thank you for choosing iClever! Please read this user manual carefully and save it for future reference.

#### Package Contents

1 x 2.4GHz Wireless Keyboard  
1 x Micro USB Charging Cable  
1 x 2.4GHz USB Receiver (It is stored in the back of keyboard)  
1 x Keyboard Cover  
1 x Us  
1 x Wi

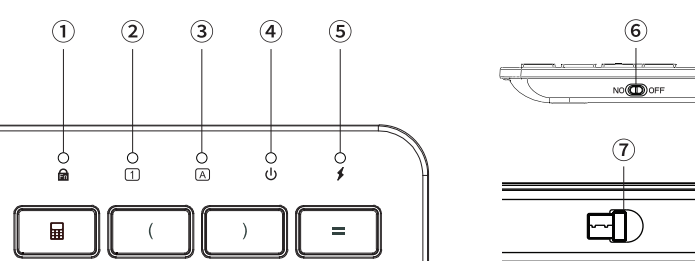
#### Spec 双膜 board

Dimension	438.5 x 129 x 18.61mm / 17.26 x 5.08 x 0.73 in
Operating Range	< 10 m / 32.8 ft
Charge Time	< 2 hours
Uninterrupted Work Time	90 hours
Lithium Battery Capacity	280 mAh
Key Life	3 million clicks
Standby Time	90 days

-1-

#### Product overview

##### Keyboard:



- Fn Lock:** Press key of to activate Fn lock function, and Fn Lock indicator will turn to be blue. With the activation of Fn lock, shortcut keys on F1-F12 are able to press directly without pressing Fn key.
- Numeric Indicator:** The numeric indicator will be green when number lock is activated.
- Caps Lock Indicator:** The caps lock indicator will be green when caps lock is activated.
- Power Indicator:** The indicator will be green for 3s when keyboard is on. Pressing + keys, power indicator will flash. Each flash represent 25% battery power, 4 flashes in total.
- Charging indicator:** Stay in red while charging, and it will be off after fully charged.
- Power Switch:** Move the switch to "ON" to power on and "OFF" to power off.
- Storage Slot:** USB Receiver is stored in here.

-2-

#### Keys and Functions

The table below describes special key combinations for windows and Mac OS.

For all the media keys to work as normal, before to use, please swap to right system by pressing keys of "fn"+ "Q" or "fn"+ "W" ( "fn"+ "Q" is for Mac OS, and "fn"+ "W" is for windows )

##### Common Keyboard Shortcuts

Shortcuts	Windows	Mac OS
Select all	ctrl+ A	cmd+ A
Copy	ctrl+ C	cmd+ C
Cut	ctrl + X	cmd+ X
Paste	ctrl + V	cmd+ V

-3-

Key Icon	Windows	Fn on Windows	Mac OS	Fn on Mac OS
	Press F1~F12 directly	Press Fn+ F1~F12	Press F1~F12 directly	Press Fn+ F1~F12
	ESC	N/A	ESC	N/A
	F1	Brightness - (win 10)	F1	Brightness -
	F2	Brightness + (win 10)	F2	Brightness +
	F3	Web browser	F3	Mission Control
	F4	Switch apps	F4	Switch apps
	F5	Search	F5	Search
	F6	Power display	F6	Power display
	F7	Previous track	F7	Previous track
	F8	Play/pause	F8	Play/pause
	F9	Next track	F9	Next track
	F10	Mute	F10	Mute
	F11	Volume -	F11	Volume -
	F12	Volume +	F12	Volume +

-4-

Special Keys	Descriptions
	Your keyboard has by default direct access to F-keys (F1~F12) If you prefer to have direct access to media and hotkeys such as mute, volume up, play/pause and so on, simply press this key to swap them.
	Press keys of "fn"+ "Q"; the keyboard layout will be swapped to Mac OS.
	Press keys of "fn"+ "W"; the keyboard layout will be swapped to windows.
	The key will work as "win" when your system is swapped to windows; the key will work as "option" when your system is swapped to Mac OS.
	Fn key is used in combination with other keys to access special features.
	The key will work as "win" when your system is swapped to windows; the key will work as "option" when your system is swapped to Mac OS.
	The key will work as "alt" when your system is swapped to windows; the key will work as "command" when your system is swapped to Mac OS.
	The key will work as "number lock" when your system is swapped to windows; the key will work as "clear" when your system is swapped to Mac OS.
	This key will work as menu function that is similar to right click of mouse when your system is swapped to windows. <b>Note: this function is not working for Mac OS.</b>
	This key will work as calculator when your system is swapped to windows. <b>Note: this function is not working for Mac OS.</b>

-5-

#### Pairing Instructions

##### For windows users:

- Take out the USB Receiver from the back of keyboard, and plug the USB receiver into the computer USB port.
- Move keyboard switch to "ON" to power on.
- Press keys of "Fn" + "W" to switch to windows system.
- Done, ready to use.

##### For Mac OS users:

- Take out the USB Receiver from the back of keyboard, and plug the USB receiver into the computer USB port.
- Move keyboard switch to "ON" to power on.
- Press keys of "Fn" + "Q" to switch to Mac OS.
- Done, ready to use.

#### If fail to connect, please read FAQs first, then follow as below:

##### Keyboard re-pairing:

- Plug out the 2.4G USB receiver. Turn on the keyboard.
- Press "Esc" + "Q" keys simultaneously; the indicator will flash green quickly.
- Immediately plug the 2.4G USB receiver into the computer within 10s and keep the keyboard close to the receiver within 30cm (0.98 ft).
- With connected successfully, the power indicator will flash green for 3 times then to be off.

**Note: If failed, please repeat above steps again.**

-6-

#### Sleep Mode

The keyboard and mouse will enter sleep mode if idle for 10 minutes. Press any key to exit sleep mode.

#### Language Switching

Windows 10: win + space or alt + shift  
Mac OS: ctrl + space

#### Device Requirements

Windows XP/Vista/7/8/10, and Mac OS 10.14.6 or above with USB 2.0 port.

##### Note:

- The keyboard is not fully compatible with Mac mini, smart TV and Xbox.
- If your device is MacBook and the port is usb 3.0, please try to connect it by a hub, extender or something similar.

#### Charging the Device

If your keyboard stop working, please try to charge the keyboard by included charging cable PC/laptop port. If you prefer to connect charging cable with adapter, before to use, please check your adapter voltage is not higher than 5V.

##### Note:

- Keyboard output: DC 5V/200mA; USB charger is not included.
- In charging process, the indicator light will light up red when charging, and it will be off when fully charged. Generally, it takes about 2 hours to get fully charged.

-7-

#### FAQ

##### 1. Is this keyboard fully compatible with MacBook and iMac?

No, it is not fully compatible. These keys are not working under MacBook and iMac. In addition, if your device is MacBook with type c port, the USB will not be able to connect, please try to connect USB receiver by a hub, extender to something similar.

##### 2. Delay typing when using the device/connection drops/ cannot connect at all/buttons or keys do not work correctly.

- Restart your PC/laptop and iClever keyboard.
- Verify the product or receiver is connected directly to the computer and not to a hub, extender, switch or something similar.
- Move the device closer to the USB receiver. If your receiver is in the back of your computer, it may help to relocate the receiver to a front port. In some cases the receiver signal gets blocked by the computer case, causing a delay.
- Keep other electrical wireless devices away from the USB receiver to avoid interference.
- Charge keyboard for 30 minutes.
- Check if there are any updates running in the background that may cause the delay.
- Try on a different USB port or try on a different computer.

##### 3. Delay typing in win 10.

- Use Windows shortcut keys **Win + R** to open **Run**.
- Type into control and hit the **Enter** key. This will launch **Control Panel**. (**Note:** If you cannot type into the proper letters, it is recommended to use the on-screen keyboard.)

-8-

- View by **Small icons**. Click the **Keyboard**.

##### 4. In Keyboard Properties,

adjust the slider of **Repeat delay** to an appropriate situation that is close to **Long**. Adjust the slider of Repeat rate to an appropriate situation that is close to **Slow**.

##### 5. Click the **Apply** and the **OK**

button to save the changes. Restart the computer and try typing a word to see if the double or multiple letters issue still persists.

##### 4. Delay typing in Mac OS.

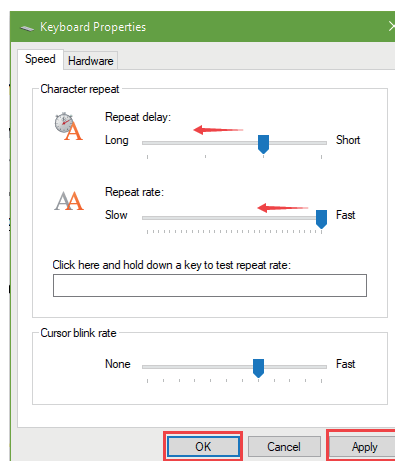
Please follow below to set:  
System Preferences > Keyboard > Keyboard > under Key Repeat to adjust the slide close to "Off Slow", and under Delay until Repeat to adjust the slide close to "Long".

##### 5. F1~F12 keys work incorrectly.

Please try to press key of and then try it again.

Please note that:

your keyboard has by default direct access to F-keys (F1~F12). If you prefer to have direct access to media and hotkeys such as as mute, volume up, play/pause and so on, simply press the key of to swap them.



-9-

#### Contact

For more questions, please contact us by support@iclever.com

#### FCC Statement

Changes or modifications not expressly approved by the party responsible for compliance could void the user's authority to operate the equipment.

This equipment has been tested and found to comply with the limits for a Class B digital device, pursuant to Part 15 of the FCC Rules. These limits are designed to provide reasonable protection against harmful interference in a residential installation. This equipment generates, uses and can radiate radio frequency energy and, if not installed and used in accordance with the instructions, may cause harmful interference to radio communications. However, there is no guarantee that interference will not occur in a particular installation. If this equipment does cause harmful interference to radio or television reception, which can be determined by turning the equipment off and on, the user is encouraged to try to correct the interference by one or more of the following measures:

- Reorient or relocate the receiving antenna.
- Increase the separation between the equipment and receiver.
- Connect the equipment into an outlet on a circuit different from that to which the receiver is connected.
- Consult the dealer or an experienced radio/TV technician for help.

This device complies with Part 15 of the FCC Rules. Operation is subject to the following two conditions: (1) this device may not cause harmful interference, and (2) this device must accept any interference received, including interference that may cause undesired operation.

-10-